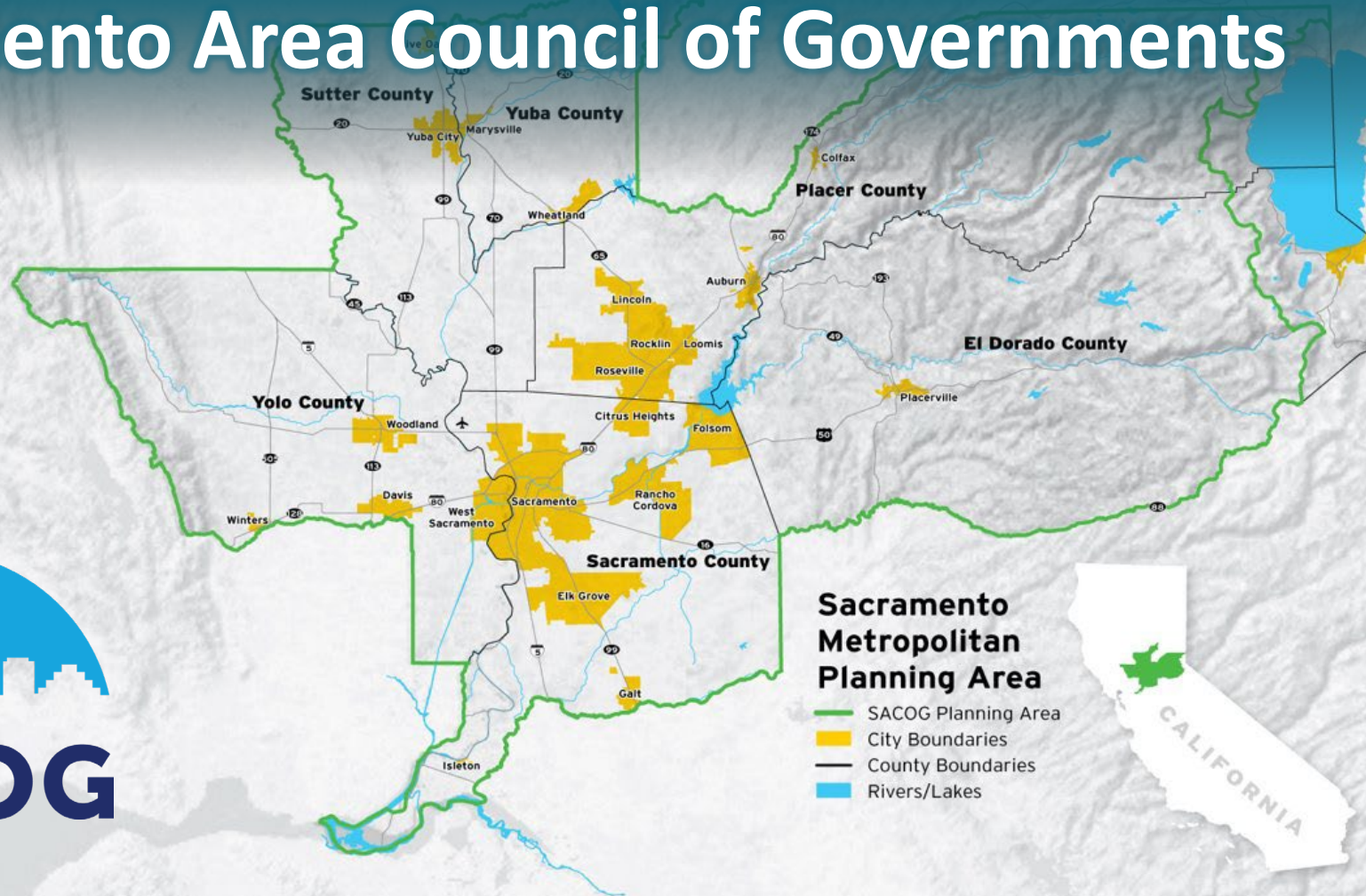




BLUEPRINT





**The Big Picture:
Long Range Regional Planning**

Sacramento Area Council of Governments



SACOG

Sacramento Metropolitan Planning Area

-  SACOG Planning Area
-  City Boundaries
-  County Boundaries
-  Rivers/Lakes



BLUEPRINT

METROPOLITAN TRANSPORTATION PLAN
SUSTAINABLE COMMUNITIES STRATEGY

Triple Bottom Line Framework



Equity



Economy



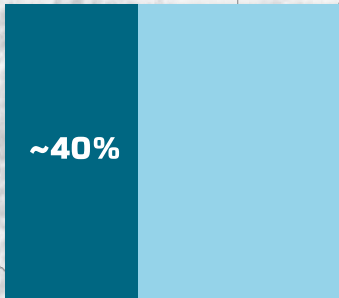
Environment

Transportation

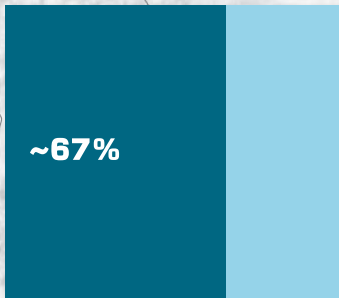


1

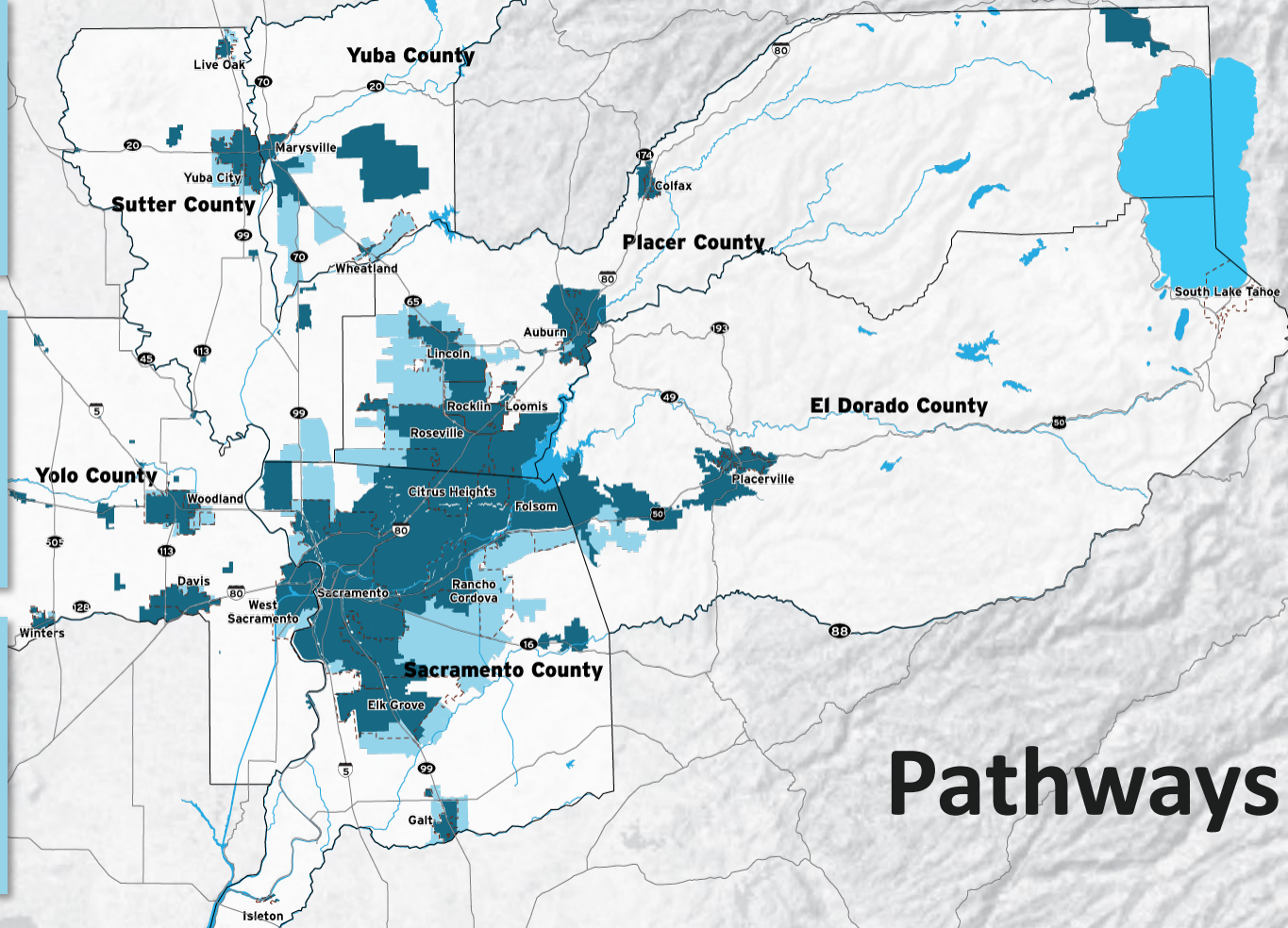
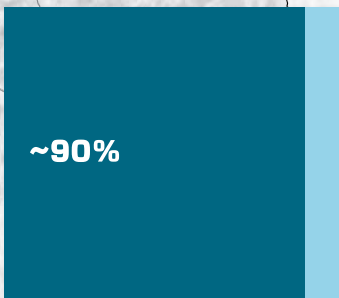
HOUSING GROWTH IN EXISTING COMMUNITIES



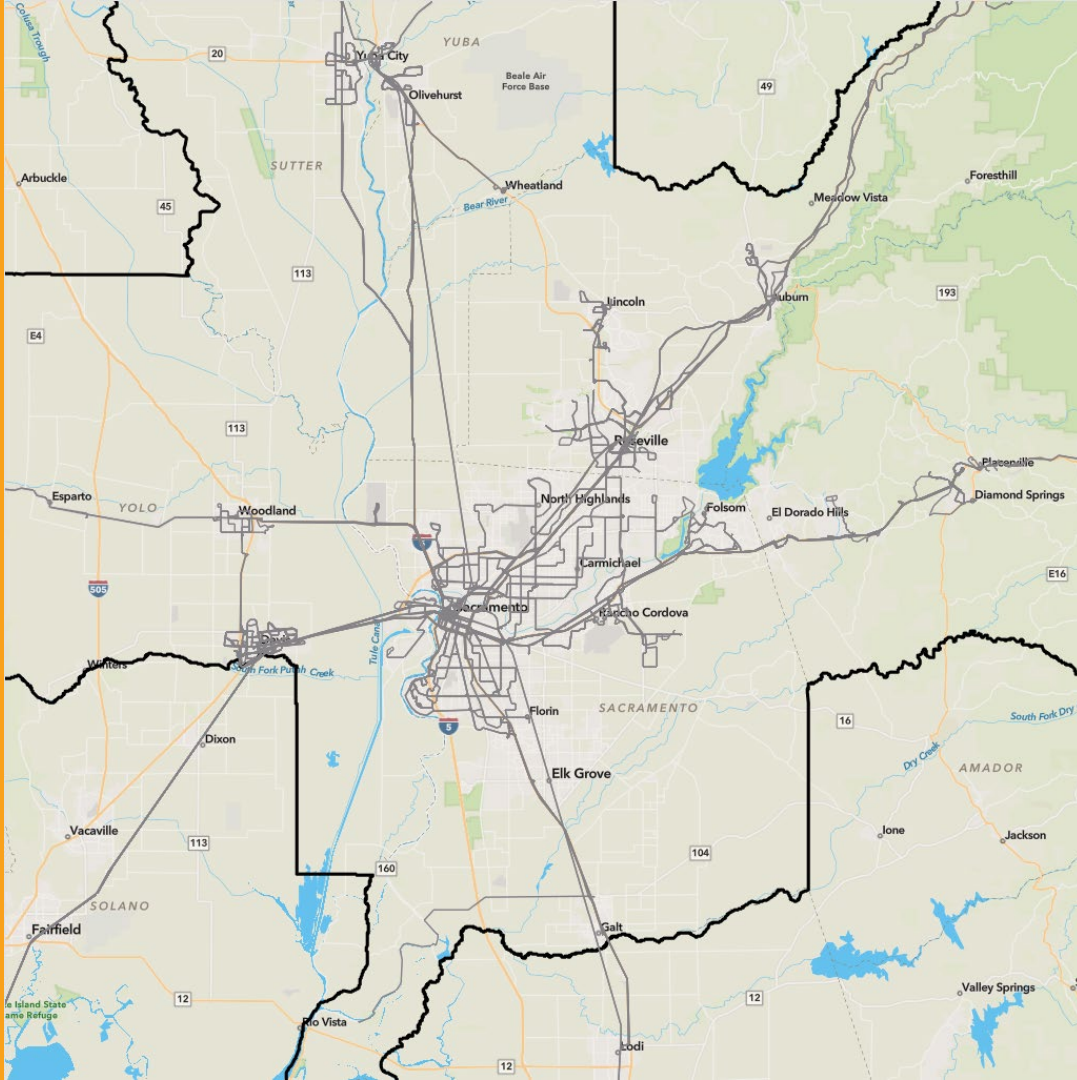
2



3



Pathways



Existing transit network

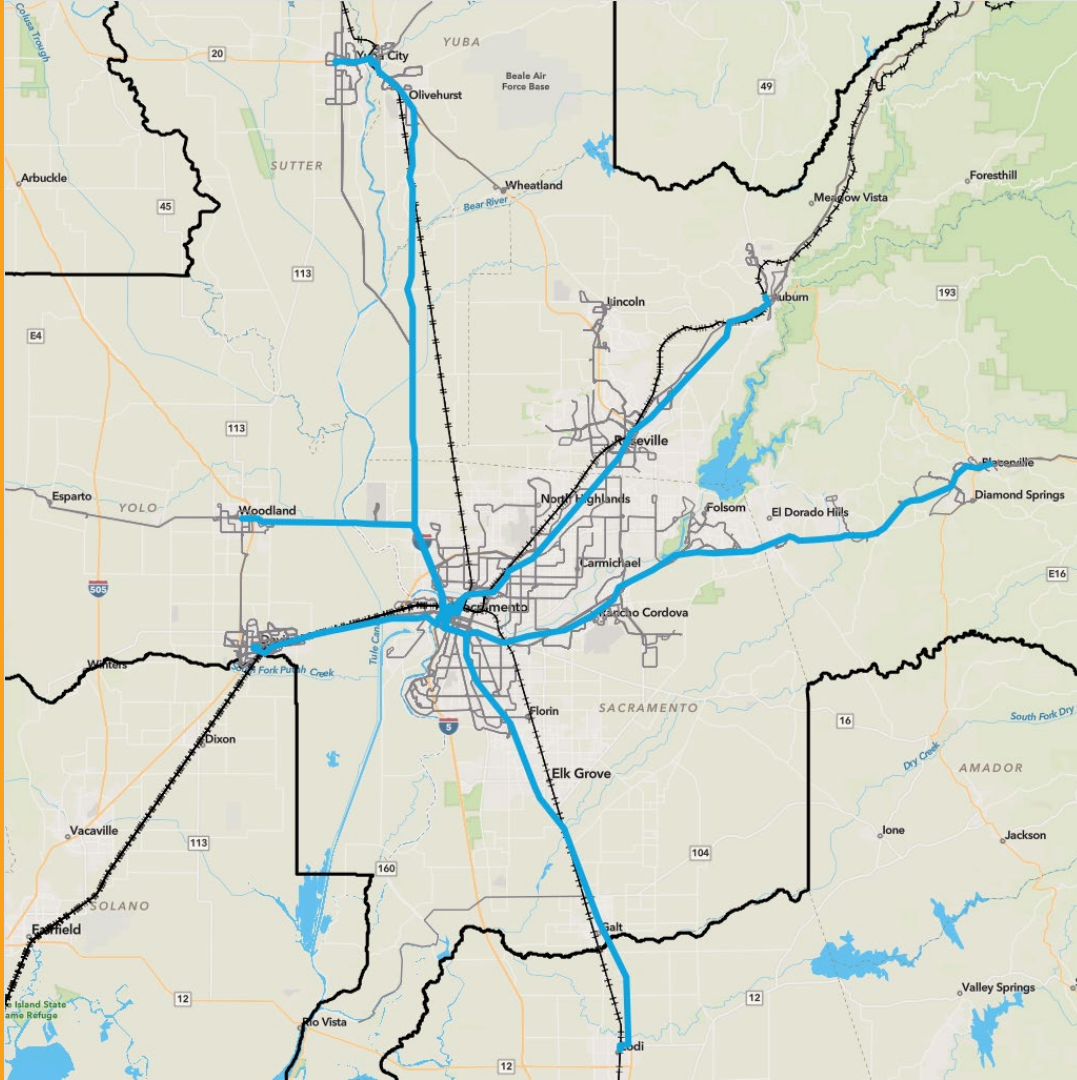
Considering the existing transit network for connectivity

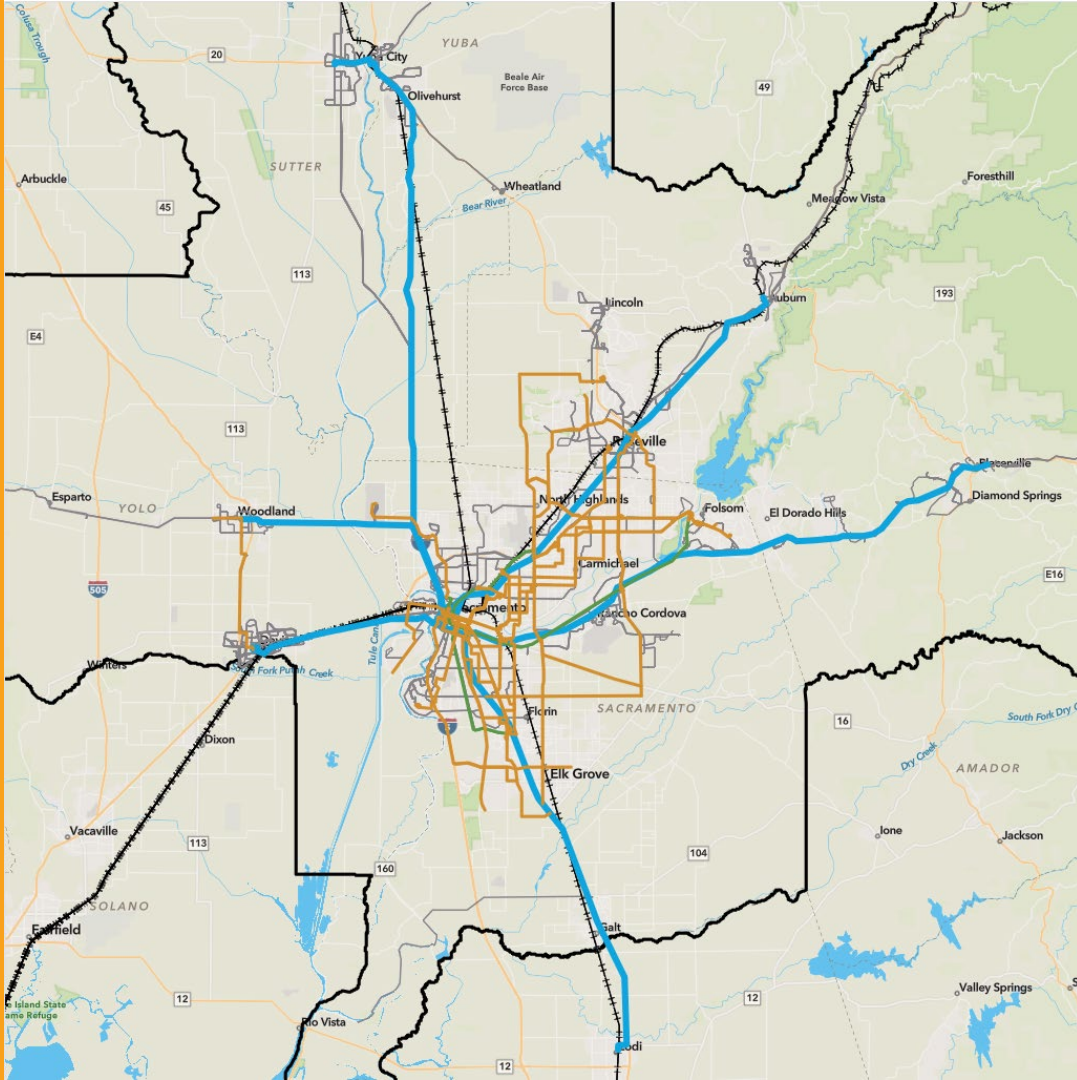
DRAFT

Long High-Capacity Transit Corridors

*Service regional long-distance trips
(cross-jurisdiction)*

- **I-80** Davis to Sacramento
- **I-80/SR-160** Auburn to Sacramento
- **I-5/I-80** Woodland to Sacramento
- **SR-70/SR-99/I-5** Yuba City to Sacramento
- **SR-99/US-50** Lodi to Sacramento
- **US-50** Placerville to Sacramento



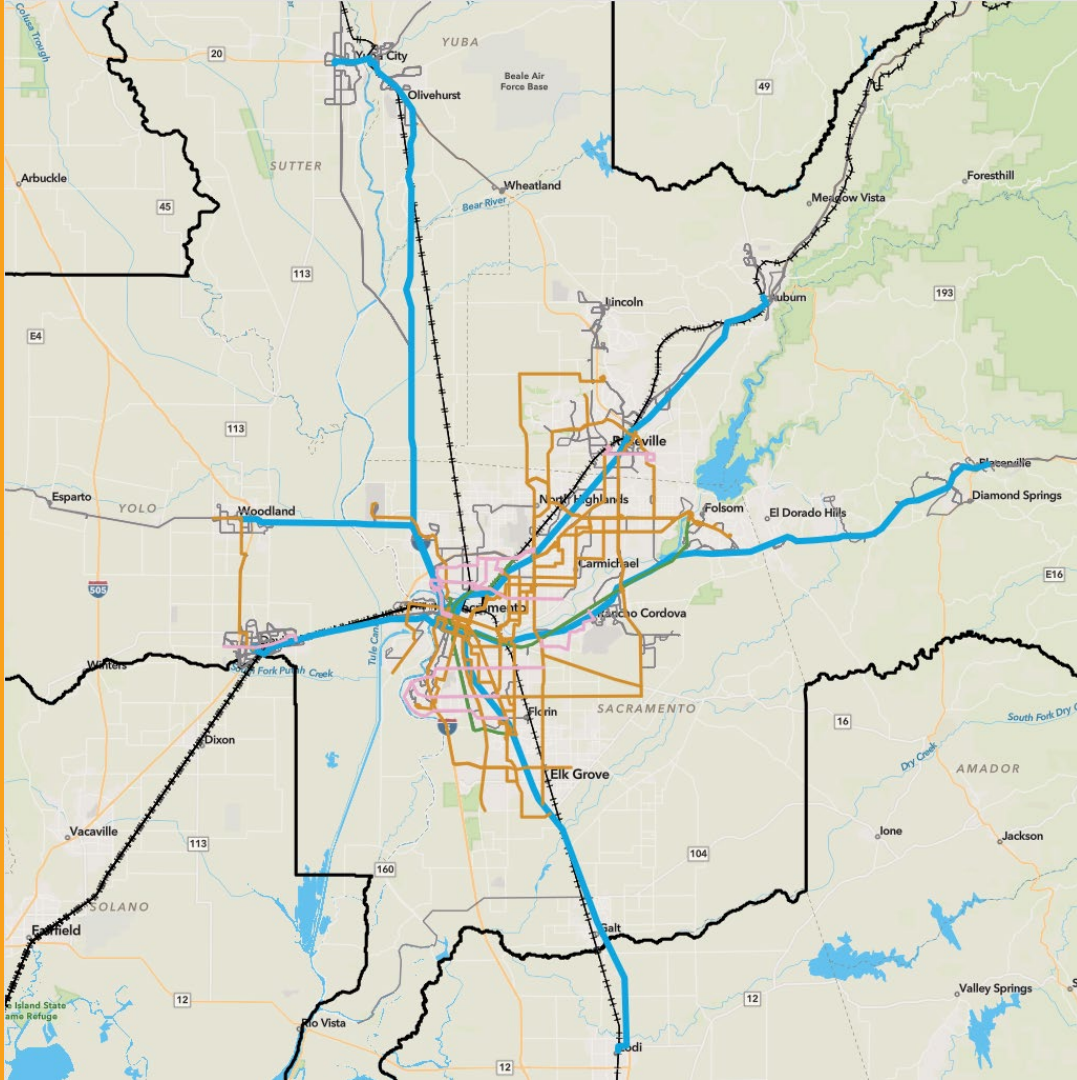


DRAFT

Medium High-Capacity Transit Corridors

Service regional medium-distance trips

- 44th
- 65th/Marconi/Manzanita
- Auburn/Riverside
- Big Horn
- Broadway
- El Camino
- Elkhorn/Sunrise
- Florin/Sunrise
- Franklin
- Franklin/MLK
- Freeport
- Greenback
- Hazel/Roseville
- Howe/65th
- J/Fulton
- Jackson
- Jefferson/Sacramento
- Laguna
- Madison
- Northrop/Morse/Watt
- Power Inn
- Stockton
- Sunrise
- Truxel/Commerce
- Walerga/Foothills
- Watt/Sunset
- I-5 Laguna
- SR-113
- Gold, Blue & Green Lines (Existing LRT)

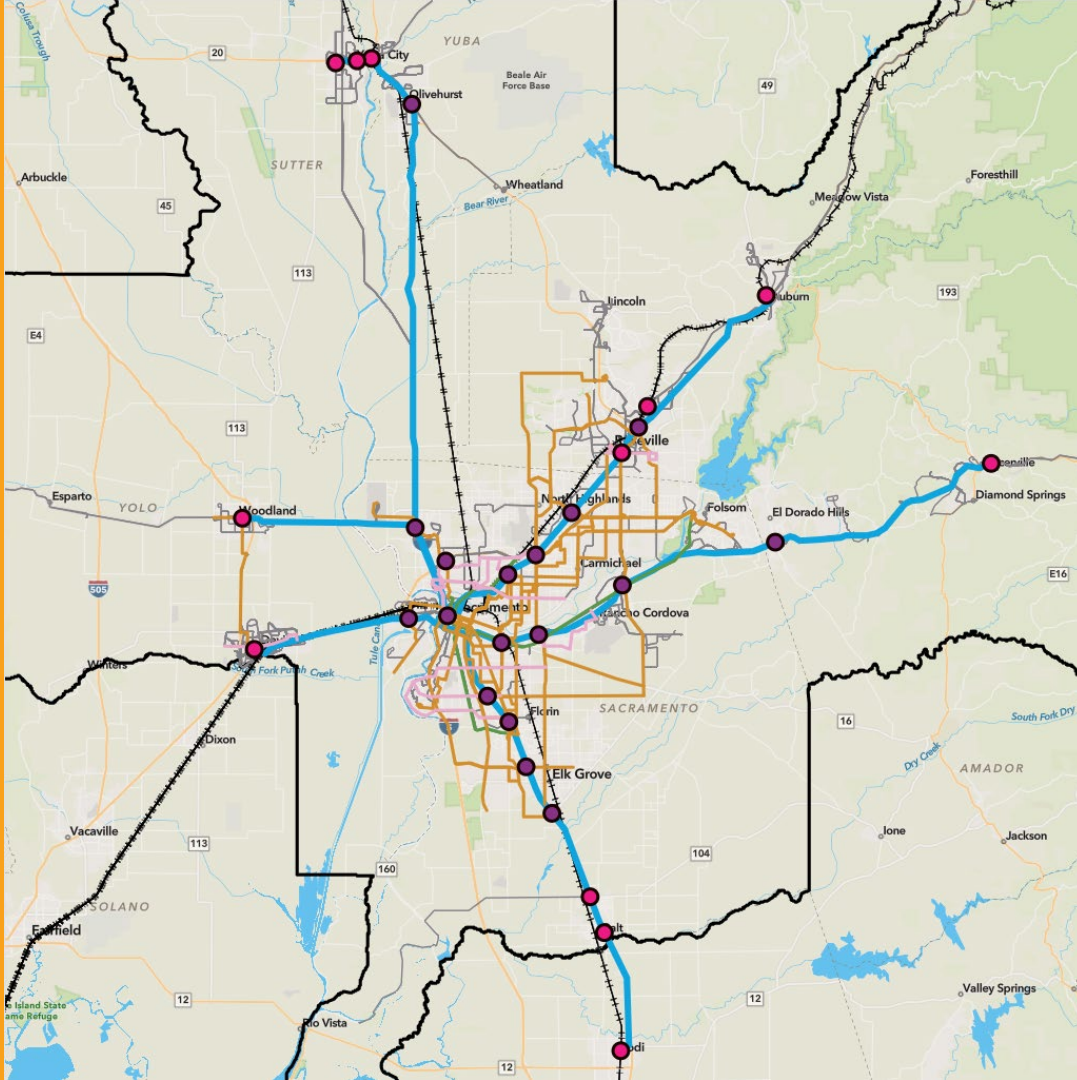


DRAFT

Short High-Capacity Transit Corridors

Service local short-distance trips

- 43rd
- Arden
- Douglas
- Florin
- Kiefer/Lincoln
- Meadowview
- Rio Linda/Grand
- Russell/5th
- San Juan
- West El Camino

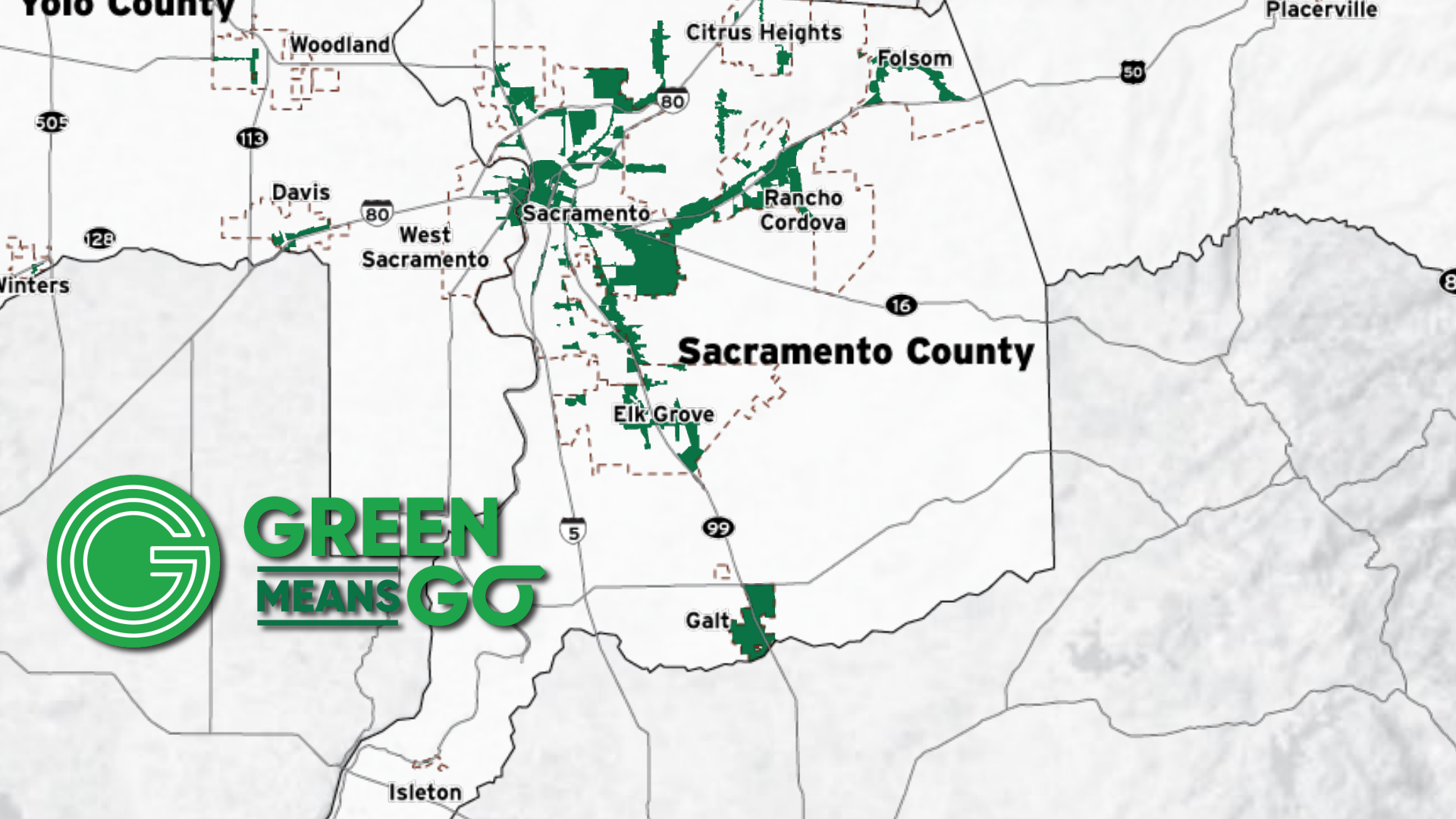


DRAFT

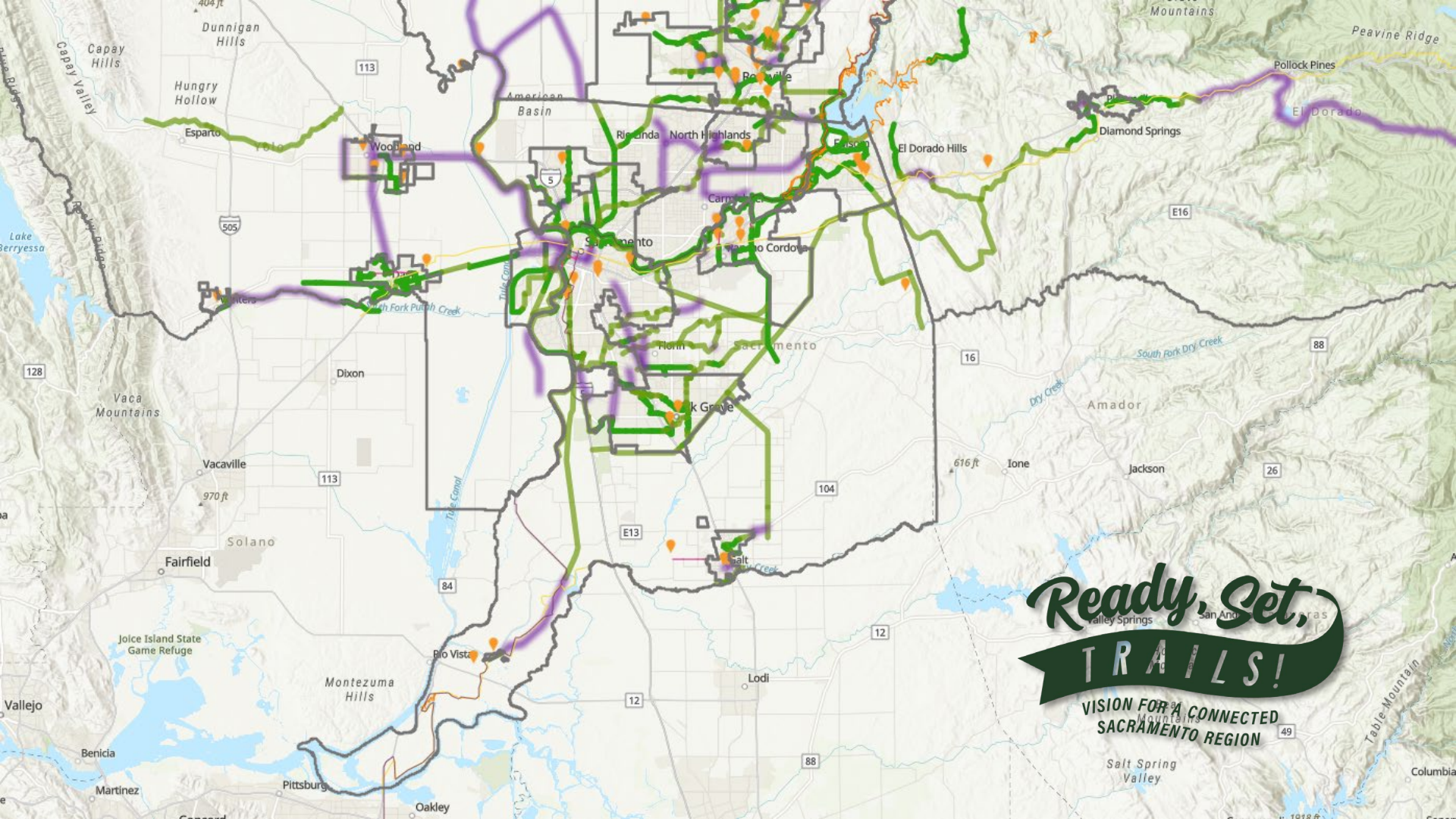
Key connections

Potential locations where:

- Transit riders make connections between high-capacity transit corridors
- First- and last-mile enhancements could expand access to the high-capacity transit network



GREEN
MEANS GO



Ready, Set, **TRAILS!**

VISION FOR A CONNECTED
SACRAMENTO REGION

SUPPORTING FIRST-MILE/LAST-MILE CLEAN OPTIONS





Zero-Emission Transportation Future for the Sacramento Region



Investing in
Under Resourced
Communities



- 600 ZEV Buses
- 5+ Charging & Refueling Facilities

1

Transit Fleet



- 5 MD-HD Charging Plazas

2

MD-HD Fleet



- 52 eMobility Hubs
- 182 LD EV Chargers

3

eMobility



- 4,000 People Trained
- 1,000 People Hired

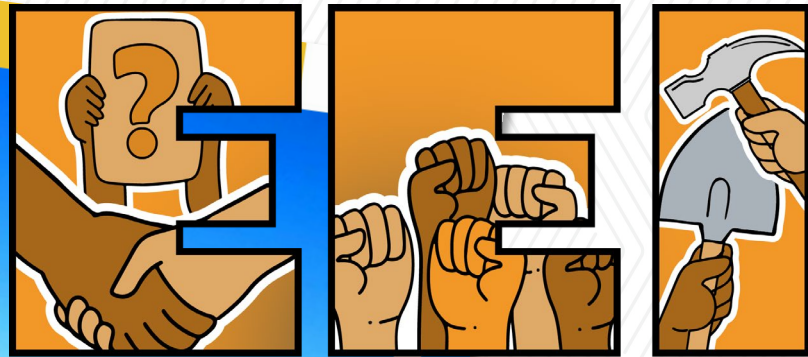
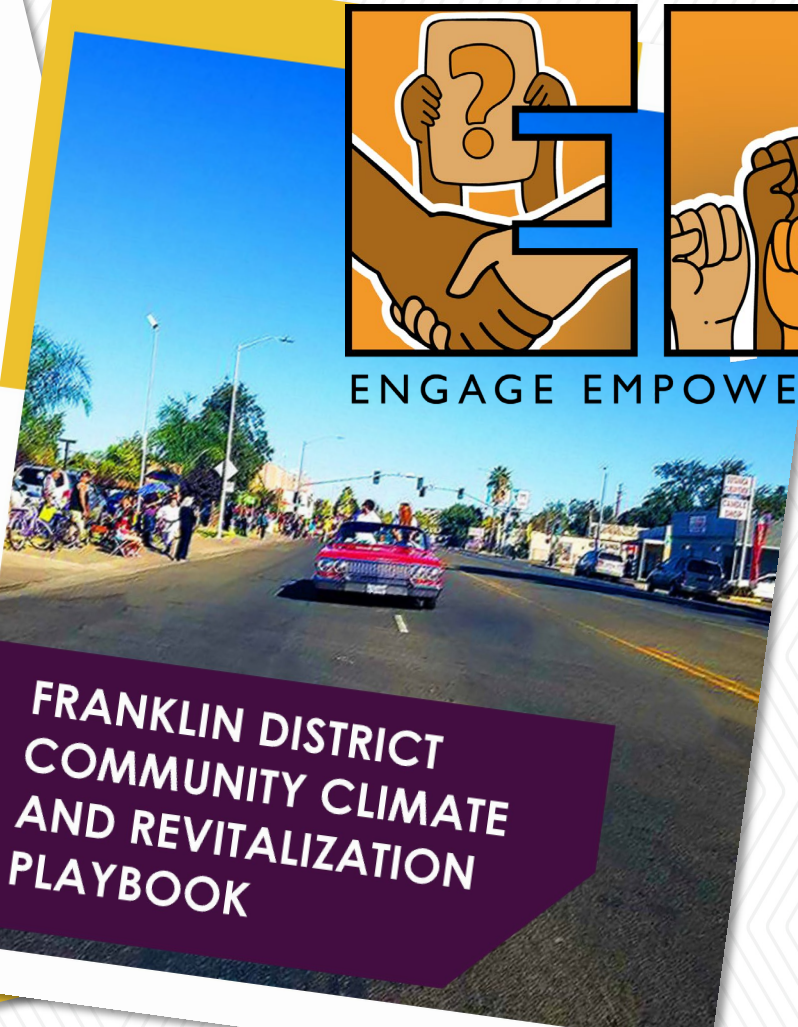
4

Clean Energy Workforce



However, the Franklin area also still faces some tough challenges:

- Many people don't earn much income, and some can't find employment.
- Many adults have limited education, and there aren't enough job, education, and training opportunities for adults and teens.
- A majority of the students in the public schools qualify for free or reduced cost lunches.
- There is an increase in homelessness.
- There is a need for more and more affordable housing.
- Per CalEnviroScreen 3.0, the Franklin District still ranks in the 90th percentile of Disadvantaged Communities for environmental concerns, including poor air quality and high heat levels that pose risks for people's health.
- The Franklin District is in the Promise Zone and Opportunity Zone, noted for low-income disparities.
- Without more transportation choices, most families have to drive, which makes their transportation costs high and contributes to air pollution.
- The District also lacks parks, trees, green space, community gardens, and shade that can help reduce air pollution and heat.
- Over the years, there has not been much public investment in our neighborhood, and there are ongoing problems with blighted properties, dumping, vandalism, and homelessness



ENGAGE EMPOWER IMPLEMENT

**FRANKLIN DISTRICT
COMMUNITY CLIMATE
AND REVITALIZATION
PLAYBOOK**



METROPOLITAN TRANSPORTATION COMMISSION

MEGA REGION

NORTHERN CALIFORNIA WORKING GROUP



MTC
I-80 Westbound Cordelia Commercial
Vehicle Enforcement Facility
(Truck Scales)

MTC
Port of Oakland Community Impact
Reduction: Roundhouse Truck EV Charging
Infrastructure and Truck Parking

MTC
Valley Link Buildout

MTC
Capitol Corridor: South Bay Connect

SACOG
Yolo I-80 and US 50 Managed Lanes

SACOG
I-5 Managed Lanes –
Sutterville Road to Yolo County Line

SACOG
Sacramento to Roseville
Third Main Track - Phase 1

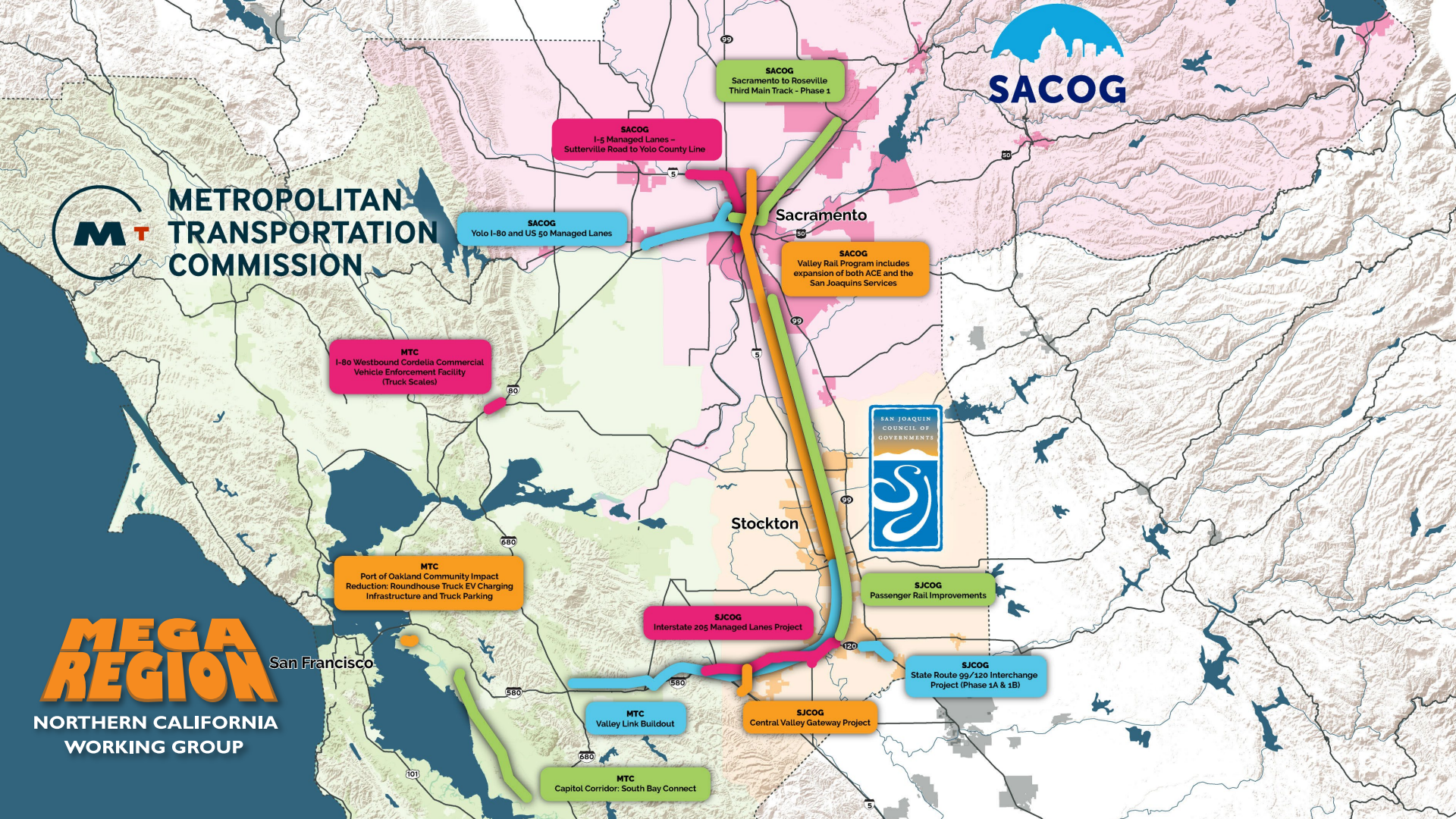
SACOG
Valley Rail Program includes
expansion of both ACE and the
San Joaquins Services

SJCOC
Interstate 205 Managed Lanes Project

SJCOC
Central Valley Gateway Project

SJCOC
Passenger Rail Improvements

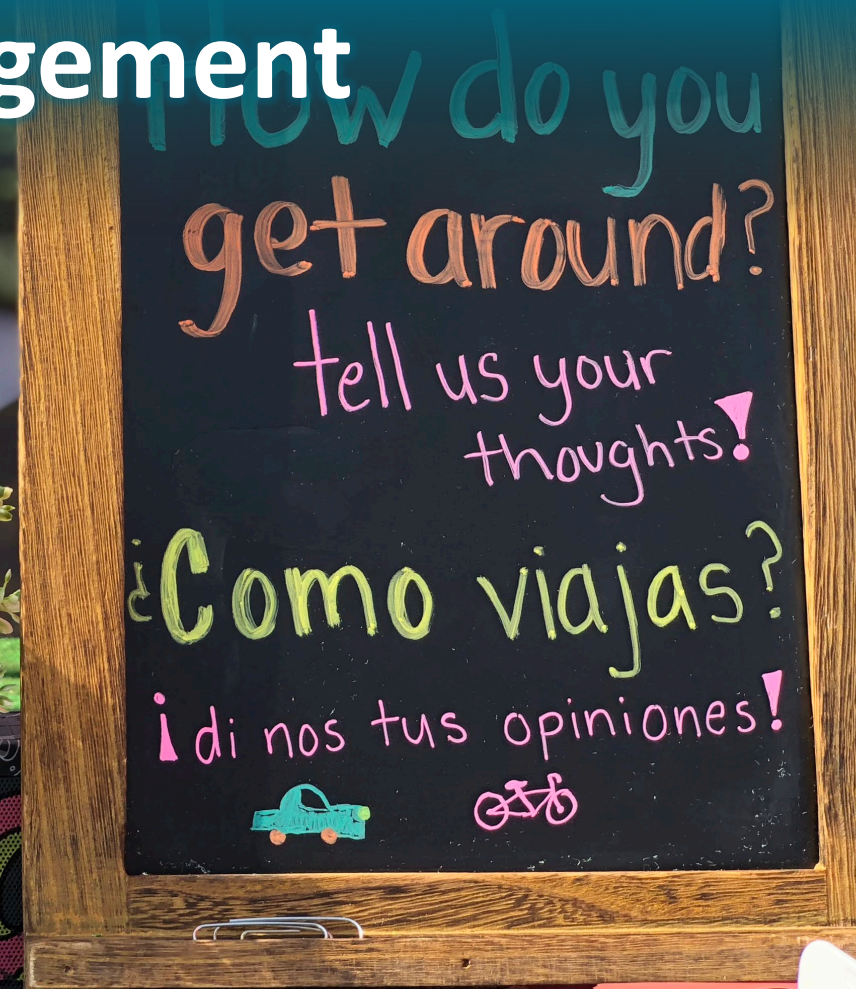
SJCOC
State Route 99/120 Interchange
Project (Phase 1A & 1B)



2022 Youth Leadership Academy



Outreach and Engagement



How do you
get around?

tell us your
thoughts!

¿Como viajas?

¿di nos tus opiniones!





BLUEPRINT